

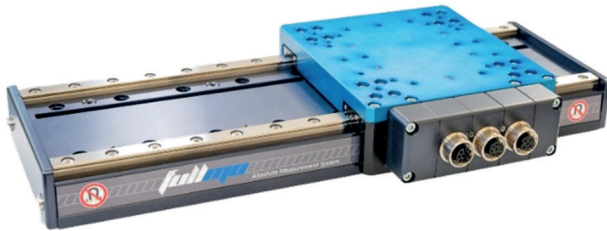
**MovingCap flatTRACK**  
**MovingCap FATtrack**

Linear direct drives –  
Absolute Positioning. Robust. Safe.

# MovingCap flatTRACK / FATtrack

## Proven technology - newly rolled out

MovingCap flatTRACK is our linear direct drive for applications in production-, series-, and special-purpose machinery. Its compact design, combined with high precision, dynamics, and durability, is complemented by easy commissioning.



 python™  
TCP/IP  
EtherCat

### Linear direct drive

### MovingCap flatTRACK / FATtrack

with integrated control electronics and TCP/IP Interface

#### Key Features:

- Compact design
- Integrated absolute encoder measuring system
- Integrated motor controller
- Ironless linear motor
- TCP/IP and optional EtherCAT communication interface
- Programming functionality
- Integrated "onboard" commissioning interface
- Digital inputs for simple I/O control
- Digital outputs for simple I/O control
- Various operating modes according to CiA DS402
- LED status display according to CiA DS303
- Construction in robust metal housing
- M12 connector terminals in sealed industrial standard design
- Python command interpreter for customer - specific application and motion profiles
- Functional safety (STO, optional)

#### flatTRACK standard models

Type	Stroke	Force range	Overall length
<b>flatTRACK 100</b>	100mm	30 - 120N	225mm
<b>flatTRACK 195</b>	195mm	30 - 120N	322mm
<b>flatTRACK 290</b>	290mm	30 - 120N	415mm
<b>flatTRACK 485</b>	485mm	30 - 120N	610mm
<b>flatTRACK 585</b>	585mm	30 - 120N	710mm
<b>flatTRACK 650</b>	650mm	30 - 120N	778mm
<b>flatTRACK 1325</b>	1325mm	30 - 120N	1450mm

#### FATtrack standard model

Type	Stroke	Force range	Overall length
<b>FATtrack 200</b>	200mm	70 - 200N*	335mm

\*depending on the version and supply voltage

## Technical specifications:

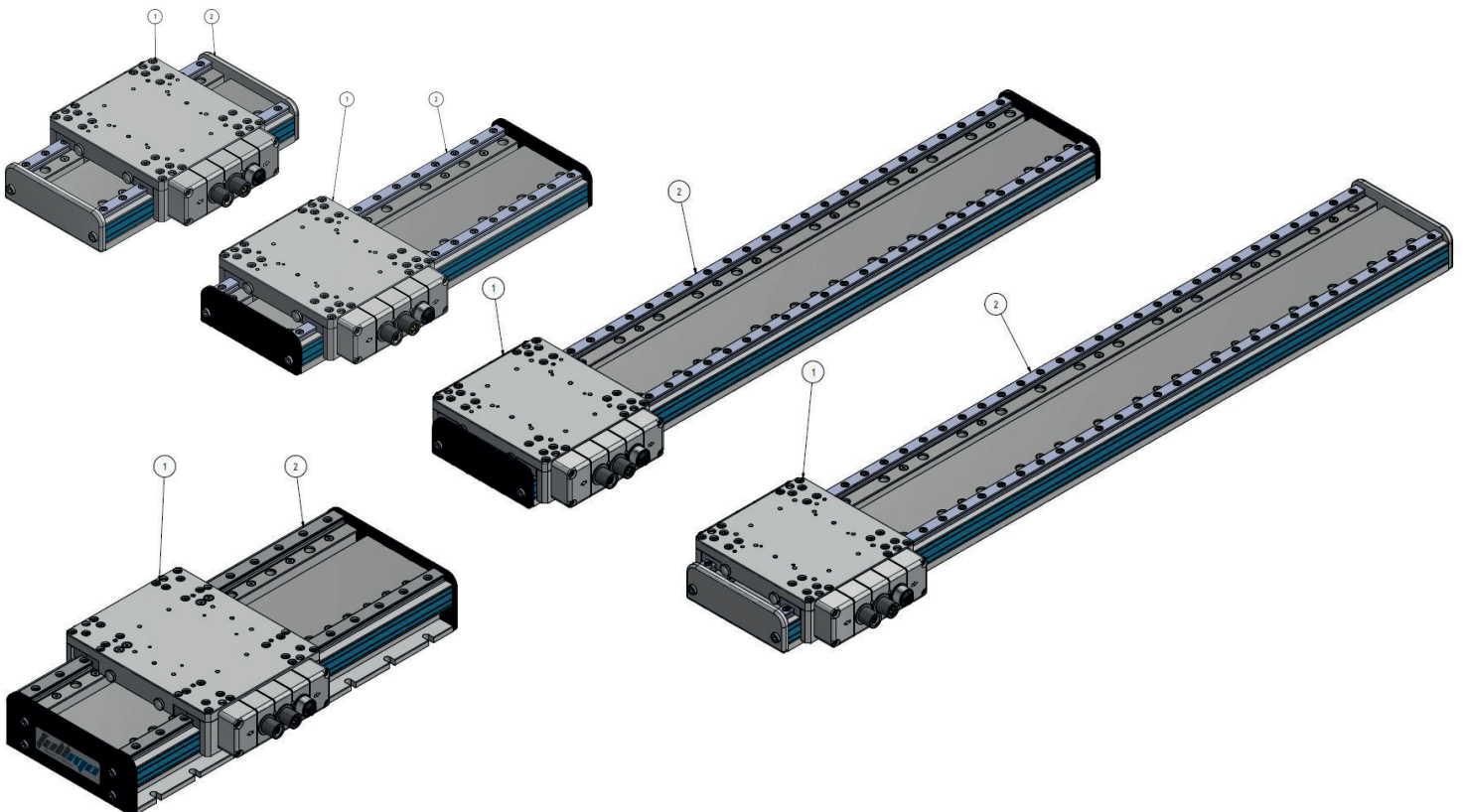
Type		flatTRACK	FATtrack
Rated voltage (motor)	Vdc	24-72	24-72
Rated voltage (logic)	Vdc	24	24
Nominal force	N	30	60
Peak force	N	60 – 120*	70 – 200*
Rated current	A	2	3
Peak current	A	4-8*	5-10*
Encoder resolution	µm	0,4	0,4
Repeatability encoder	µm	1,2	1,2
Degree of protection		IP40	IP40
Operating ambient temperature	°C	0... +60	0...+60

### Dimensions MovingCap flatTRACK:

Carriage footprint: 118 x 110mm (LxW)

Guide profile: 205 - 786mm x 100mm (LxW)

Height: 41mm (H)



### Dimensions MovingCap FATtrack:

Carriage footprint: 148 x 118mm (LxW)

Guide profile: 335 x 130mm (LxW)

Height: 61mm (H)



Fullmo GmbH  
Robert-Bosch-Straße 5  
88677 Markdorf

Tel. +49 7544 30 73 39-0  
Fax +49 7544 30 73 39-9

Mail [info@fullmo.de](mailto:info@fullmo.de)  
Web [www.fullmo.de](http://www.fullmo.de)